

Norwich City Football Club

Season 1970-71



Official Programme
including
**Football League
Review**

1/-

FOOTBALL LEAGUE (Division Two)

NORWICH CITY

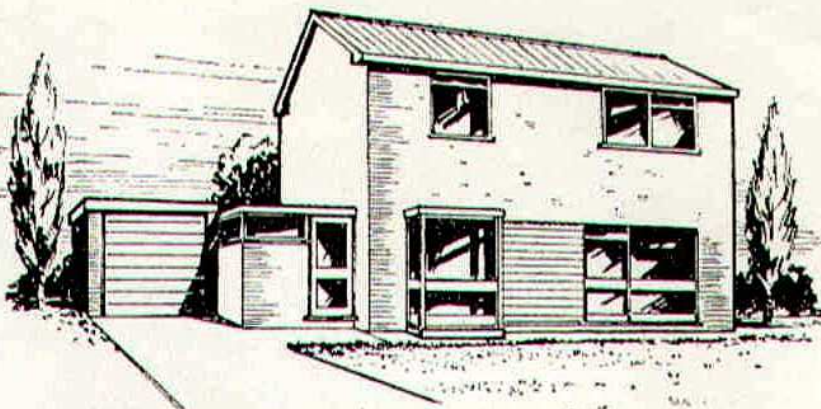
v.

SWINDON TOWN

Wednesday, 21st October, 1970

Kick-off 7.30 p.m.

**MODERN
HOUSES**
and
**Bungalows
for Sale
on several
select
coastal
sites**



- 10 years NHBC guarantee
- 95% Mortgages
- No Road Charges
- Freehold
- Architect Designed



HUNSTANTON · NORFOLK
Tel. HUNSTANTON 2426 & 2992



HEATRAE

The Great Name in
WATER HEATING

HEATRAE LIMITED · NORWICH NOR 29A

THOMAS TILLET LTD.

Watchmakers, Jewellers and Silversmiths

Trophies for Sports and Pastimes a Speciality

*Medallists to—
The Norfolk County Football Association
Norwich Business Houses League
Anglian Combination
Norwich and District Junior Football League
Norwich Minor League—and many others*

**17 ST. GILES' STREET
NORWICH, NOR 17E**

Telephone: Norwich 25922

CATALOGUES AVAILABLE

NORWICH CITY FOOTBALL CLUB

F.A. CUP SEMI-FINALISTS, SEASON 1958-59

FOOTBALL LEAGUE CUP WINNERS, SEASON 1961-62

President: JAMES L. HANLY, J.P.

Vice-President: S. W. SPRINGALL

Directors:

GEOFFREY C. WATLING (Chairman)

K. H. HOWARD

H. ROBINSON, F.C.A.

W. M. YOUNG

G. F. B. FISH (Vice-Chairman)

ALDERMAN ARTHUR SOUTH, J.P.

Hon. Club Surgeon: NORMAN J. TOWNSLEY, F.R.C.S.

Hon. Medical Officer: DR. A. WOOLSTONE

Manager: R. SAUNDERS

Secretary: A. E. WESTWOOD, J.P.

Ground: CARROW ROAD

(Telephone: 21514)

Carrow Road Notebook

Swindon Town are probably as well-known in Norwich as any club in the Football League. Founded in 1881 they were members of the old Southern League even before Norwich City came into being, and from 1905 to 1934 they were among the Canaries' regular opponents. During that period, incidentally, they achieved the distinction of inflicting on City their heaviest-ever defeat, beating them 10-2 at Swindon in September, 1908. Matches between the two clubs, in fact, have often produced high scores. In the four seasons from 1908 City conceded no fewer than twenty-seven goals at Swindon, and the record book is dotted with fives and fours to both sides.

Since 1934 our meetings with the Wiltshire club have not been so frequent, but they have usually held plenty of interest—and there was certainly no lack of it at Carrow Road last season, though City had to be content with victory by a single goal, netted by Albert Bennett. That was Swindon's first appearance in Norwich after their triumphant 1968-69 season, in which they regained Second Division status and collected the Football League cup by beating Arsenal 3-1 at Wembley.

Their tide of success continued last season, when they finished fifth in Division Two, only three points behind second-placed Blackpool. They have made a good start to their 1970-71 programme, too. They are welcome visitors to Carrow Road tonight, and we look forward to a game that we hope will be in keeping with the tradition of fine football when the clubs have met in the past.

Although Swindon have never exceeded Second Division status—and that has been limited to only a few seasons—they can claim to be one of the pioneers of soccer South of the Thames. They began to engage professionals as long ago as 1894, and although they had their bad times they established themselves as one of the leading clubs in the old Southern League. It was while they were members of this competition, too, that they twice reached the semi-finals of the F.A. Cup, losing first to Newcastle and then, after a replay, to Barnsley.

The step up to Football League status posed

problems at the County Ground, and the club had to seek re-election three times during the long wait before, in 1963, promotion to the Second Division was at last achieved. Division Two football lasted only two seasons that time, but the pattern of success was established, and having fought their way back Swindon have no intention this time of allowing their grip to slip.

There have been several links between City and Swindon in the past, but the most recent one was severed during the summer, when ex-Canary Don Heath left the County Ground to join another of his former colleagues, Tommy Bryceland, at Oldham. Several famous players have turned out in the Swindon colours, too, the most notable of them being inside-forward Harold Fleming, who was capped nine times for England. Another Swindon player whose ability will be well remembered by older City supporters—and players—is Maurice Owen, who seemed to number the Canaries among his favourite opponents and who has retained his connection with the club as trainer.

The lads visit to Portsmouth on Saturday last, brought them their first away League victory of the season and without Silvester, Briggs, Stringer injured and Foggo indisposed they are to be congratulated on bringing back the two points from Fratton Park, a happy hunting ground for us in recent years. Glenn Self made a perfect start to his Second Division career with a great goal early in the game and Trevor Howard got our other goal in the twenty-second minute. The Reserve team, weakened by injuries at the top, was probably the youngest Reserve team we have ever fielded in a Combination game. Against a strong Arsenal team which included Simpson and Sammels, they lost by four goals to one, but the young lads put up a good fight and were not disgraced. Our goal, the first of the game, was scored by Grapes from a Brown free kick. The 'A' team which included three trialists entertained Ely City in an Eastern Counties League game at Trowse and were beaten for the first time in ten games by four goals to one. Our goal was scored by Tony Peart.

Telephone - 33221 (3 lines)

'Grams : "ROADSTONE," NORWICH

EDWARD J. EDWARDS

(NORWICH) LIMITED

Public Works Contractors

NORWICH, NOR 44S

★ **TARPAVING SPECIALISTS** ★

SECOND DIVISION SURVEY

With a quarter of the season's programme over, there is no sign of any club running away with the championship of the Second Division. Some half-dozen sides are locked within striking distance of each other at the top, but a threat to the leaders could well come from any of a number of others midway down the table and even below.

A certain pattern of consistency has, however, been set, and Leicester City have probably done enough to date to make them favourites for promotion in the eyes of many experts. Surprise packet, undoubtedly, have been Oxford United, whose recent 4-0 victory over Bristol City at Ashton Gate underlined their right to be among the pacemakers. Newcomers Luton Town, with striker Malcolm Macdonald continuing to hit the headlines, have also maintained their challenge, and with Hull City seem to have acquired defensive strength to back their undoubted ability in attack.

Two clubs who have made spectacular progress in recent weeks are Sheffield United and Middlesbrough. Midway through September United were next to bottom, Middlesbrough only a few places above them. It was remarked in these notes at the time that such position could well be false, and this seems to have been justified, for both clubs have climbed their way up the table to join the challengers. Sunderland and Birmingham, too, have shown steady improvement, but the fans of Charlton, Millwall, Queen's Park Rangers and Blackburn Rovers are still awaiting the opportunity to celebrate a run of success.

Despite constant talk of defensive football clogging the works of the modern game there has been no acute shortage of goals generally in the Second Division, where the scoring pattern has not differed greatly from that in the other divisions of the League.

The next phase of the 1970-71 season, up to Christmas, holds considerable interest, for with so many clubs in the running for major honours there are bound to be a series of "dog eat dog" fixtures. Consistency will be the keynote, but it will be surprising if the halfway stage is reached with any side so far out in front as to be odds on favourites for promotion.

ADVANCE TICKET SALES. Stand tickets at 15s., 10s. and 9s. for the League game against The Orient at Carrow Road on Saturday, 31st October, 1970, will be on sale from the Ticket Office (Main Office) after tonight's game. Postal applications are also being accepted for this match as in the past.

HOME or AWAY



**OUR CHRISTMAS HAMPERS ARE
ALWAYS AN ACCEPTABLE GIFT
PRICED £2 to £10**

**BROCHURE OBTAINABLE FROM
F. LAMBERT & SON LTD., BER ST., NORWICH**

MOTOR INSURANCE
YOUR BEST POLICY
CONSULT

HEWLETT & SUMNER LTD

44 King Street

NORWICH

The Brokers with over 20 Years Experience

SWINDON STARS



DON ROGERS



ARTHUR HORSFIELD

A GOOD KICK-OFF !!

SAVE REGULARLY WITH THE

NORWICH BUILDING SOCIETY

5 $\frac{1}{2}$ %

ST. ANDREW'S HOUSE, NORWICH,
NOR 54A

TELEPHONE 21367

5 $\frac{1}{2}$ %

* REGULAR MONTHLY SAVINGS EARN INTEREST AT 5 $\frac{1}{2}$ % AND WE PAY THE INCOME TAX. A FIRST-CLASS MORTGAGE SERVICE IS ALSO AVAILABLE. SEND OR CALL FOR FULL DETAILS.



contract furnishers & upholsterers

anglia shopfitting co ltd
59a heigham road
norwich NOR 82G

telephone 22858

SWINDON PEN PICTURES

PETER DOWNSBOROUGH. Born Halifax. Signed in August, 1965, from Halifax Town where he was a product of local football. Regular member of promotion-winning side of season 1968-69. Played in Football League Cup-winning team of season 1968-69, and in League Cup-winners Cup-winning team of 1969.

OWEN DAWSON. Born Hatfield. Joined the club from Portsmouth in June, 1962. He was a regular first-team player until he was unlucky to lose his place through injury. A fast tenacious player, he is a former Youth international.

ROD THOMAS. Born Glyncorrwg. A former youth player with the club. He was signed from Gloucester City in July, 1964. Has gained Welsh Under-23 Caps and full Welsh Caps. Regular member of promotion-winning side of season 1968-69. Played in Football League Cup-winning team of 1968-69 and in League Cup-winners Cup-winning team of 1969.

JOE BUTLER. Born Newcastle. Joined Swindon in 1965 from Newcastle United where he graduated to the senior ranks through the club's junior team. Regular member of promotion-winning side of 1968-69.

JOHN TROLLOPE. Born Swindon. A local player who joined the Swindon ground staff from school. He was selected for the first-team at the beginning of the 1960-61 season when he was just sixteen-years-old, and was ever present during that season. Together with his partner that year, who was also sixteen, they were the youngest full-backs ever to appear as a pair in League football.

ROGER SMART. Born Swindon. Another local player who joined the club direct from Swindon Schoolboys team. At seventeen he was appearing regularly at centre-forward in the Reserve team, but he excels as a deep lying inside-forward. A versatile player who is able to play at wing-half.

STAN HARLAND. Born Liverpool. Was signed from Carlisle United in July, 1966. Formerly with Everton and Bradford City. He has been a regular choice at left-half since making his debut at the beginning of the 1966-67 season. A forceful player who likes to go forward to back up the forwards in attack.

A. E. ROSS & SON LTD.

GLASS MERCHANTS AND GLAZIERS

Little Paddock Street, Norwich

Telephone 23615

Present . . .

The ROSS DOUBLE GLAZING SYSTEM
elegantly designed for your home

★ Also Shelves, Tabletops, Silvering, Drilling, Bevelling, Polishing, Brilliant Cutting
Prompt WINDSCREEN REPLACEMENT SERVICE

A Good Clean Side!

Swan

**LAUNDRY
NORWICH**

*Launderers and Dry Cleaners
to Norwich City F.C.*

for good food

try . . .

The OAKLANDS HOTEL

THORPE ST. ANDREW

*in pleasant surroundings
where car parking is
no problem*

Telephone NORWICH 34471

DON ROGERS. Born Paulton. He was signed by Swindon when only fifteen and quickly came to the fore. Gained many England Youth international caps and subsequently played in the England Under-23 international team. Regular member of promotion-winning side of 1968-69.

PETER NOBLE. Born Sunderland. Joined the club in 1968 from Newcastle, for whom he played for four years. Prefers to play an attacking role. Regular member of promotion-winning side of 1968-69.

JOHN SMITH. Born London. Signed from Torquay United in June, 1968, and previously played for Leyton Orient, West Ham United, Tottenham Hotspur and Coventry. Former England Under-23 international.

CHRIS JONES. Born Altrincham. A hard-working centre-forward signed from Manchester City.

ARTHUR HORSFIELD. Born Newcastle. A 1969 close-season signing from Newcastle United. Previously played for Middlesbrough, whom he joined as a Youth international. Top goal scorer last season.

FRED FORD (team manager). Player—1935-46 (Charlton); 1946-48 (Millwall); 1948-50 (Carlisle). Injury finished playing career. Then trainer coach with Carlisle until 1953. Career since then: 1954-60—Bristol Rovers (coach); 1960-67—Bristol City (manager—club gained promotion from Third to Second Division during this period); 1967-68—Swindon (coach); 1968-69—Bristol Rovers (manager); 1969—Swindon (team manager). While with Bristol Rovers was trainer of England B and Under-23 teams and for F.A. teams.

NEXT AWAY GAME. On Saturday next, we visit Blackburn Rovers, kick-off 3 p.m. Seats in the Nuttall Stand at 12s. may be booked in advance from the Secretary, Blackburn Rovers Football Club, Ewood Park, Blackburn, telephone Blackburn 55432. Ground prices 6s. (juveniles and old age pensioners 3s.), Enclosure 7s. Mascot Coaches are running an excursion to this match leaving Bell Avenue, Norwich, at 6 a.m. Return fare 30s. Seats on the coach may be booked at Mascot Coaches, Castle Meadow, Norwich, telephone Norwich 45888 or 24518.

We are Specialists . . .

in the market of COPPER, BRASS, LEAD, ELECTRIC MOTORS,
USED BATTERIES and all types of SCRAP METAL.

We offer BEST CASH PRICES and collection can be arranged
if necessary.

PERUZZI'S SALVAGE & GENERAL MERCHANTS
70-72 DERBY STREET, NORWICH Telephone 22894

Make Your Goal the
**MUSTARD
POT**



THORPE ROAD

(Within shooting distance of this Ground)
where Ray & Liz Castle will make you welcome
A WHITBREAD HOUSE

**THOMSON
BROS.**

Non-Ferrous
Metal and
Scrap Iron
and Steel
Merchants

CITY STATION
SIDINGS
NORWICH

Telephone 23044



HAULAGE CONTRACTORS

Telephone Costessey 2926

FIAT

for No

FIAT EXPORT SELLING AGENTS TO

POINTER MOTOR CO

AYLSHAM ROAD

Telephone Norwich 45345

Norwich City (Yellow Shirts, Green Collar and C

(1) KEVIN
KEELAN

(2) CLIVE
PAYNE

(4) KEN
MALLENDER

(5) DUNCAN
FORBES

(7) TREVOR
HOWARD

(8) ALBERT
BENNETT

(9) GLENN
SELF

Substitute

Referee

Mr. R. Challis
(Tonbridge)



(11) DON
ROGERS

(10) PETER
NOBLE

(9) CHRIS
JONES

(6) STAN
HARLAND

(5) FRANK
BURROWS

(3) JOE
BUTLER

(1) ROY
JONES

Swindon Town (Red Shirts, White Shorts)

After the whistle—The Bell

The Bell Hotel

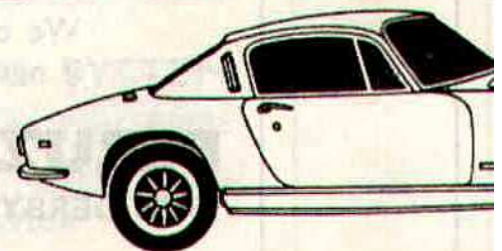
Orford Hill, Norwich

Phone 21256 for a table
for dinner tonight

A TRUST HOUSE HOTEL



LOTUS AT HOME



Retail Sales Dept., Lotus Cars (Sales) Ltd., Norwich, N



Distributors

for Norfolk and Suffolk

ING AGENTS TO U.S. PERSONNEL

TOR COMPANY LTD.

NORWICH

A **MECCA LTD. COMPANY**

Green Collar and Cuffs, Black Shorts)

(1) KEVIN
KEELAN

(3) ALAN
BLACK

(5) DUNCAN
FORBES

(6) GERRY
HOWSHALL

(9) GLENN
SELF

(10) GRAHAM
PADDON

(11) TERRY
ANDERSON



Linesmen

Mr. R. A. Driver

Red Flag

Mr. A. G. Gorham

Yellow Flag

(9) CHRIS
JONES

(8) DAVID
DANGERFIELD

(7) JOHN
SMITH

(5) FRANK
BURROWS

(4) TONY
GOUGH

(2) ROD
THOMAS

(1) ROY
JONES

Substitute

White Shorts)

HOME



ales) Ltd., Norwich, NOR 92W. Tel: Wymondham 341J.

R. G. Pilch Ltd.

SPORTS OUTFITTERS

EQUIPMENT, CLOTHING and
FOOTWEAR FOR EVERY SPORT

★ *LISTS FREE*

1 BRIGG STREET, NORWICH

Telephone 28224



**Support your home team
-Mann Egerton- and let us
support you!**

How will we support you? With a winning range of new cars, on-the-ball service and an outstanding line-up of Double Guarantee used cars. So support the team that's on your side—Mann Egerton—and score every time! At Norwich, Gt. Yarmouth, Lowestoft and King's Lynn.

Mann Egerton

ESTD 1908



A MANN EGERTON
COMPANY

**WHERE'S
THE BALL?
EVERY SATURDAY IN THE
PINK UN**

£650 FIRST PRIZE

£50 SECOND PRIZE

10 "TENNERS" 10 "FIVERS"





Meet the Canaries

PETER SILVESTER

First of two newcomers signed by manager Ron Saunders last autumn—the other was, of course, Graham Paddon—Wokingham-born Peter Silvester is a former Reading schoolboy who was snapped up by the Elm Park club and soon made his name as one of the Third Division's leading centre-forwards. He signed for the Canaries in September, 1969, made his Second Division debut at Birmingham, scored his first goal for City in their home victory over Oxford United soon afterwards and finished last season with ten goals from thirty-one appearances. He found the net three more times in a run of fourteen matches this term before injury put him out of the side for the League Cup replay with Bristol Rovers at Eastville.

MAN IN THE MIDDLE

This evening our referee is Mr. Ronald Challis from Tonbridge, who is paying only his second visit to Carrow Road. He was last here for the Sheffield United match, way back on the 7th September, 1968. He commenced refereeing in 1952 whilst serving with the R.A.F. in Singapore. Mr Challis graduated through various local leagues after returning to England and was appointed to the Southern League list in 1959. Three years later he became a Football League linesman and was promoted to the Referee's list in 1968.

Some of his more important matches have been Inter-Cities Fairs Cup Linfield v. Vitorria in 1968 and a quarter-final match for the F.A. Challenge Trophy in 1969-70.

A production officer for an industrial staff magazine, Mr. Challis is married with two sons aged eight and seven years. He is very interested in photography and enjoys swimming and playing squash. A keen member of the Referees Association, he was treasurer of the Kent Referees Association for ten years and is at present Chairman of the Tunbridge Wells branch, a position he has held for the last eight years.

SPORTS QUIZ

The transfer market has been extremely busy recently. Can you name the players who were involved in transfers between the following clubs?

1. Colchester to Aldershot.
2. Charlton to Birmingham.
3. Charlton to Orient.
4. Charlton to Aston Villa.
5. Orient to West Ham.
6. West Ham to Orient.
7. Ayr to Sunderland.
8. Leicester to Sheffield Wednesday.
9. Coventry to Charlton.
10. Everton to Nottingham Forest.

(The answers will be found on page 11)

★ SPECIALISTS IN
**SADDLERY, RIDING WEAR and
HORSE CLOTHING**

R. A. BAKER (Saddler) of NORWICH

**4 WATERLOO ROAD
NORWICH
Telephone 49581**

REPAIRS CARRIED OUT ON
THE PREMISES

SECOND DIVISION			FOOTBALL LEAGUE CUP		
Aug. 15	PORTSMOUTH	1—1	Sept. 9	CHESTER	0—0
" 22	Luton Town	0—0	" 16	Chester (Replay)	2—1
" 29	SHEFFIELD UNITED	1—0	Oct. 7	BRISTOL ROVERS	1—1
Sept. 2	MILLWALL	1—0	" 13	Bristol Rovers (Replay)	1—3
" 5	Sunderland	1—2	FOOTBALL COMBINATION		
" 12	CHARLTON ATHLETIC	2—0	Aug. 15	Reading	2—1
" 19	Cardiff City	1—1	" 19	SWINDON TOWN	1—2
" 26	HULL CITY	0—2	" 22	IPSWICH TOWN	1—1
" 30	Watford	0—2	" 29	Queen's Park Rangers	1—0
Oct. 3	Oxford United	1—1	Sept. 2	Chelsea	1—0
" 10	CARLISLE UNITED	1—1	" 5	WEST HAM UNITED	0—1
" 17	Portsmouth	2—0	" 12	Arsenal	1—1
" 21	SWINDON TOWN	—	" 15	Bristol City	Postponed
" 24	Blackburn Rovers	—	" 19	CARDIFF CITY	1—0
" 31	ORIENT	—	" 26	Oxford United	1—2
Nov. 7	Bolton Wanderers	—	Oct. 3	READING	3—0
" 14	SHEFFIELD WED.	—	" 10	Bristol Rovers	3—2
" 21	(1) LEICESTER CITY	—	" 14	Bournemouth	0—0
" 28	Birmingham City	—	" 17	ARSENAL	1—4
Dec. 5	MIDDLESBROUGH	—	" 24	CRYSTAL PALACE	—
" 12	(2) Bristol City	—	" 27	Swansea City	—
" 19	LUTON TOWN	—	" 31	Southampton	—
" 26	Queen's Park Rangers	—	Nov. 7	TOTTENHAM	—
Jan. 2	(3) F.A. Cup	—	" 14	Plymouth Argyle	—
" 9	WATFORD	—	" 28	GILLINGHAM	—
" 16	Swindon Town	—	Dec. 5	Birmingham City	—
" 23	(4) F.A. Cup	—	" 12	BOURNEMOUTH	—
" 30	BIRMINGHAM CITY	—	" 19	Ipswich Town	—
Feb. 6	Middlesbrough	—	" 26	FULHAM	—
" 13	(5) BRISTOL CITY	—	Jan. 9	Swindon Town	—
" 20	Leicester City	—	" 16	SWANSEA CITY	—
" 27	Orient	—	" 23	LEICESTER CITY	—
Mar. 6	(6) BLACKBURN	—	" 30	Gillingham	—
" 13	Sheffield Wednesday	—	Feb. 6	BIRMINGHAM CITY	—
" 20	BOLTON WANDERERS	—	" 13	Leicester City	—
" 27	(S.F.) SUNDERLAND	—	" 20	BRISTOL CITY	—
April 3	Sheffield United	—	" 27	SOUTHAMPTON	—
" 9	Charlton Athletic	—	Mar. 6	Crystal Palace	—
" 10	QUEEN'S PARK R.	—	" 13	PLYMOUTH ARGYLE	—
" 12	OXFORD UNITED	—	" 20	Tottenham Hotspur	—
" 17	Carlisle United	—	" 27	West Ham United	—
" 24	CARDIFF CITY	—	April 3	QUEEN'S PARK R.	—
" 26	Millwall	—	" 10	Fulham	—
May 1	Hull City	—	" 17	BRISTOL ROVERS	—
" 8	F.A. Cup Final	—	" 21	CHELSEA	—
			May 1	OXFORD UNITED	—
			" 5	Cardiff City	—

Fixtures Copyright by the Football League Ltd. (Season 1970/71) Fixtures in CAPITAL LETTERS are HOME FIXTURES

'DRIVURSELF' at lowest possible cost

— in a Car from **ROBINSONS**

RIVERSIDE ROAD, NORWICH

— OF COURSE

Call or Phone
NORWICH 27134 (3 lines)
for Details

NEW CARS — MOTOR CARAVANS — COMMERCIALS

BUSH BUILDERS (Norwich) LTD.

BUILDERS AND CONTRACTORS

ALL TYPES AND SIZES OF INDUSTRIAL DEVELOPMENT
PRIVATE HOUSING DEVELOPMENT
NORWICH AND COASTAL ESTATES

Mile Cross Lane, Norwich, NOR 43N Tel. 46326



Heavily outnumbered on the edge of the penalty area, Peter Silvester still managed to force the ball goalwards during City's match against Carlisle at Carrow Road.

JOBS! JOBS! JOBS!

OFFICE INDUSTRIAL
TECHNICAL

PERMANENT OR TEMPORARY

Available through

The

East Anglian Staff Agency

39 Exchange St. Norwich Tel. 27653

★ THE GRASS SEED

FOR CARROW ROAD TURF

SUPPLIED BY

**Woods, Sadd, Moore
& Co.**

Division of

DALGETY FRANKLIN LIMITED

GRASS SEED SPECIALISTS

**Green Lane West, Rackheath
Norwich, Nor 97A**

TELEPHONE SALHOUSE 581

LIST OF APPEARANCES, GOAL SCORERS AND LEAGUE TABLE

	League, L. Cup and F.A. Cup		Combination		DIVISION II (Up to and including 17/10/70)							
	Apps.	Goals	Apps.	Goals	P.	W.	D.	L.	F.	A.	Pt.	
Anderson, T. ...	5	—	7	—	Hull	12	8	2	2	16	8	18
Bennett, A. ...	15	6	—	—	Luton	12	7	3	2	23	7	17
Black, A. ...	16	—	—	—	Leicester	12	7	3	2	21	11	17
Briggs, M. ...	14	1	—	—	Oxford	12	6	4	2	18	12	16
Brown, F. ...	—	—	8	—	Sheff. Utd.	12	6	4	2	22	15	16
Butler, G. ...	14	—	2	—	Cardiff	12	5	5	2	17	12	15
Cawston, M. ...	—	—	8	—	Norwich	12	5	4	3	15	13	14
Darling, M. ...	3	—	10	3	Sunderland	12	4	5	3	11	10	13
Easthall, ...	—	—	2	1	Middlesbro'	12	5	2	5	19	15	12
Foggo, K. ...	12	1	—	—	Portsmouth	12	4	3	5	18	16	11
Forbes, D. ...	16	—	—	—	Swindon	12	4	3	5	13	12	11
Fryer, P. ...	—	—	2	—	Sheff. Wed.	13	4	3	6	17	22	11
Goodwin ...	—	—	8	1	Watford	12	3	5	4	14	18	11
Govier, S. ...	—	—	13	1	Q.P.R.	12	4	2	6	21	21	10
Grapes, S. ...	—	—	11	1	Bolton	13	4	2	7	16	22	10
Harmer, T. ...	—	—	2	—	Bristol City	12	3	4	5	16	26	10
Howard, T. ...	16	2	—	—	Orient	12	3	4	4	8	17	10
Howshall, G. ...	4	—	6	1	Birmingham	12	3	3	6	12	16	9
Keelan, K. ...	16	—	—	—	Millwall	12	3	3	6	12	18	9
Kent, P. ...	—	—	10	—	Blackburn	12	1	6	5	9	16	8
Kerlin, P. ...	—	—	3	—	Charlton	12	1	4	7	8	21	6
Mallender, K. ...	2	—	10	—								
O'Donnell, N. ...	—	—	11	—								
Paddon, G. ...	16	—	—	—								
Payne, C. ...	3	—	6	—								
Sargent, G. ...	—	—	6	2								
Self, G. ...	2	1	10	6								
Silvester, P. ...	14	3	—	—								
Stringer, D. ...	14	1	—	—								
Vasper, P. ...	—	—	5	—								
Wilkinson, P. ...	—	—	7	—								

- QUIZ ANSWERS.**
 1. Roger Joslyn; 2. Alan Campbell;
 3. Gordon Riddick; 4. Harry Gregory;
 5. Tommy Taylor; 6. Peter Bennett;
 7. Dick Malone; 8. Peter Rodrigues;
 9. Dietmar Bruck; 10. Tommy Jackson.

**SUPPORT YOUR CITY
 BY INVESTING IN**

NORWICH CORPORATION

BONDS

8 ¹⁰/₂ %

FOR 3 TO 20 YEARS

- ★ **Trustee Securities**
- ★ **No Expense to Lender**
- ★ **Interest Paid Every Six Months**

MINIMUM AMOUNT £200

For conditions of issue and application forms, apply to the CITY TREASURER (Dept. 30)
 CITY HALL, NORWICH, NOR 01A
 Telephone: Norwich 22233 Ext. 278

MASCOT CONTINENTAL

Inclusive Tours DIRECT from NORWICH

GERMANY — FRANCE — BELGIUM — HOLLAND, Etc.

FULL DETAILS FROM

TOP CLASS HOTELS

MASCOT COACHES, 1 Castle Meadow, NORWICH

MASCOT SEAGULL, 59 Marine Parade, GT. YARMOUTH

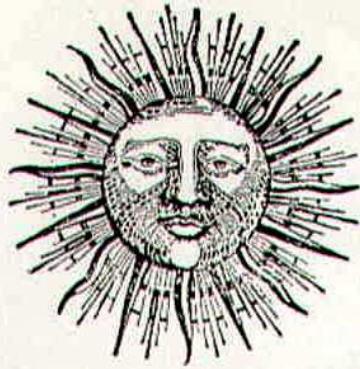
A		N	
B		O	
C		P	
D		Q	
E		R	
F		S	
G		T	
H		U	
I		V	
J		W	
K		X	
L		Y	
M		Z	



**Tolly
is different**

and we don't just mean the shape

Tolly is Different, Tollykeg, Tolly Export and Cobnut—the beers that satisfy—obtainable at the bars,
Distributors: BARWELL & SONS, NORWICH



TOWN HOUSE HOTEL

Thorpe St. Andrew Tel. Norwich 35212

AA RAC** Rosette for Good Food**

VISIT THE TOWN HOUSE RESTAURANT
LUNCHES · TEAS · DINNERS

À LA CARTE MENU

FOR RESERVATIONS TELEPHONE NORWICH 35212



see the goals on

MATCH OF THE WEEK

every Sunday



ANGLIA TELEVISION

Drayton 355
(7 lines)



Gt. Yarmouth 63241
King's Lynn 61131

R. G. CARTER LIMITED
DRAYTON, NORWICH, NOR 52X

Subsidiary Companies

R. G. Carter (Gt. Yarmouth) Ltd., Hobland Hall, Bradwell, Gt. Yarmouth
R. G. Carter (King's Lynn) Ltd., Littleport Street, King's Lynn

VISIT THE Great Wall
Chinese Restaurant

Top of Prince of Wales Road, Norwich

Telephone 27402



- ★ A daily business lunch costs 14/-, you pay only 6/- at The Great Wall
- ★ Book now, for your Party or just a table for two
- ★ Large or small Parties can be arranged at your own home
- ★ Meals to take home, or delivered

FOR RESERVATIONS PLEASE RING 27402

長
城
飯
店